

model kartonowy ♦ 1:25

MODELIK

Rok II (IX)

Nr 3/98

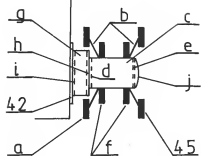
ISSN 1428-3840

MCV-80 Warrior

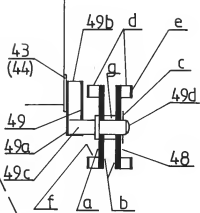
BRYTYJSKI WSPÓŁCZESNY BOJOWY WÓZ PIECHOTY



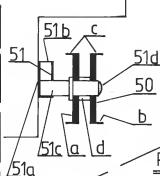
Rys. 11 (cz.45)



Rys.14 (cz.48)



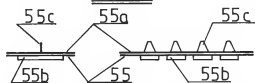
Rys.15 (cz.50)



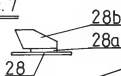
Rys. 20



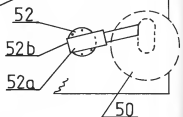
Rys. 19



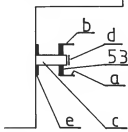
Rys. 7



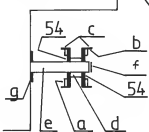
Rys.16



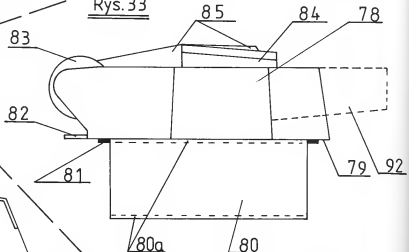
Rys.17 (cz.53)



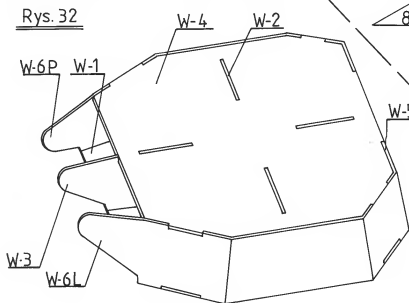
Rys.18 (cz.54)



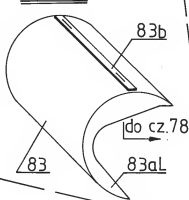
Rys.33



Rys.32



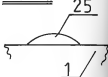
Rys. 34



Rys. 6

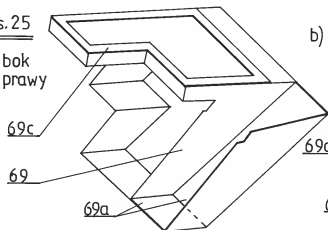


Rys.5

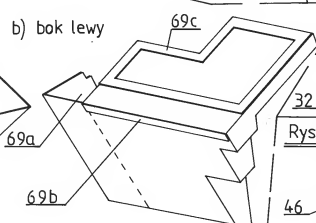


Rys.25

a) bok prawy



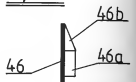
b) bok lewy



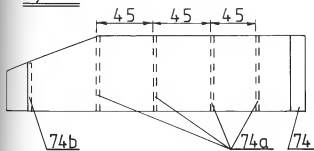
Rys. 8



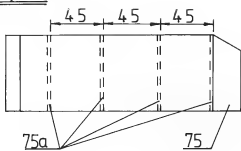
Rys.12



Rys.28



Rys.29



Rys.13

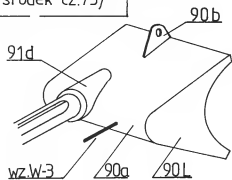
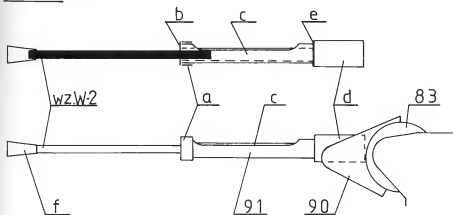


(cz. 74a,b wkleić w środek cz.74)

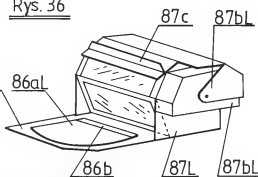
(cz.75a wkleić w środek cz.75)

Rys.39

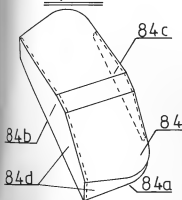
Rys.38 (cz.91)



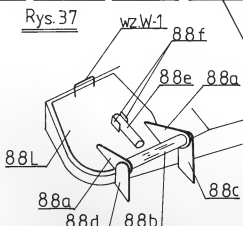
Rys.36



Rys.35



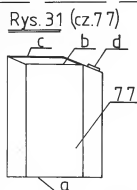
Rys.37



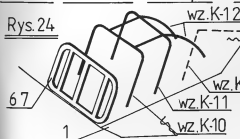
Rys.30



Rys.31 (cz.77)



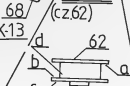
Rys.24



Rys.22 (cz.63)



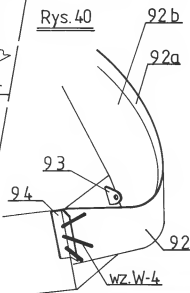
Rys.21 (cz.62)



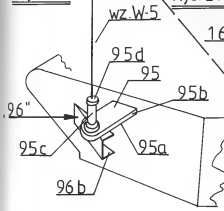
Rys.23



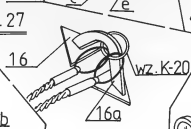
Rys.40



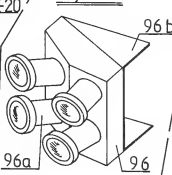
Rys.41



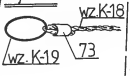
Rys.27

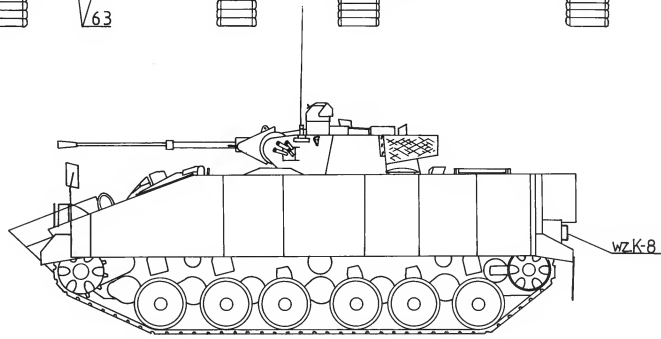
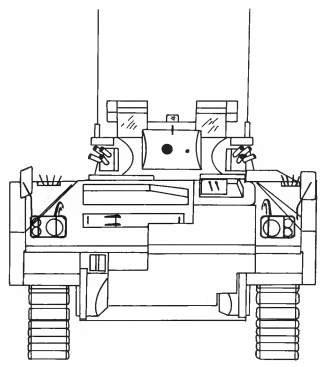
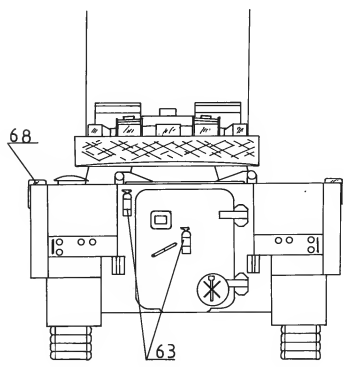
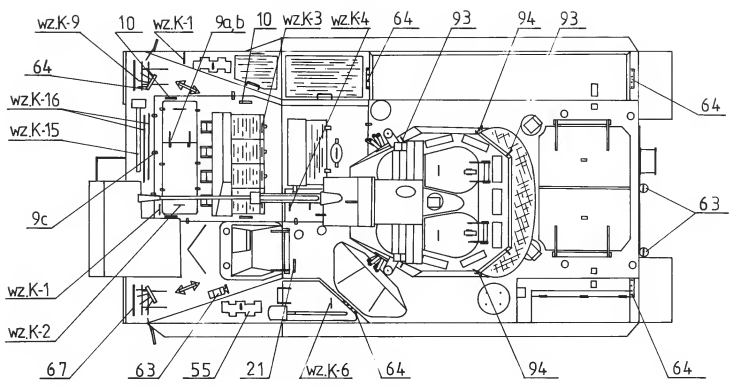


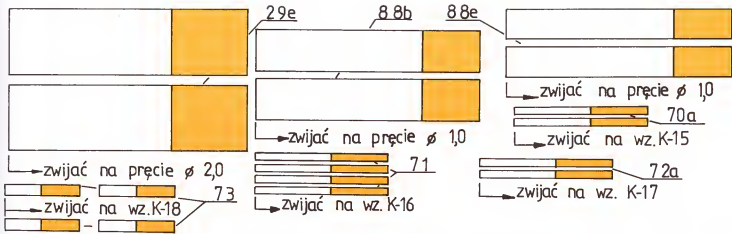
Rys.42



Rys.26

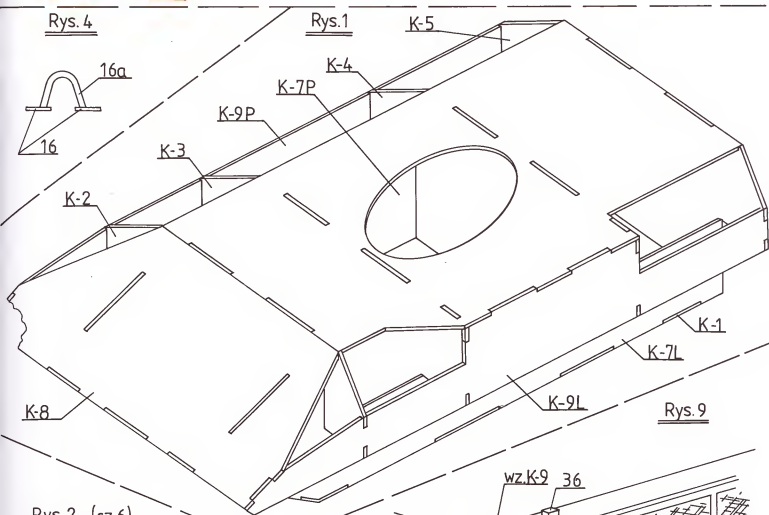






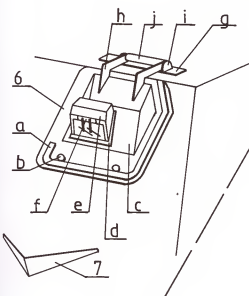
Rys. 4

Rys. 1

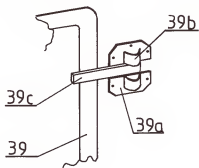


Rys. 9

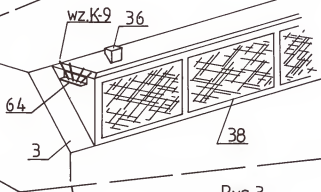
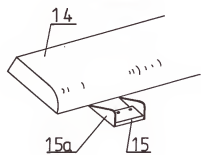
Rys. 2 (cz.6)

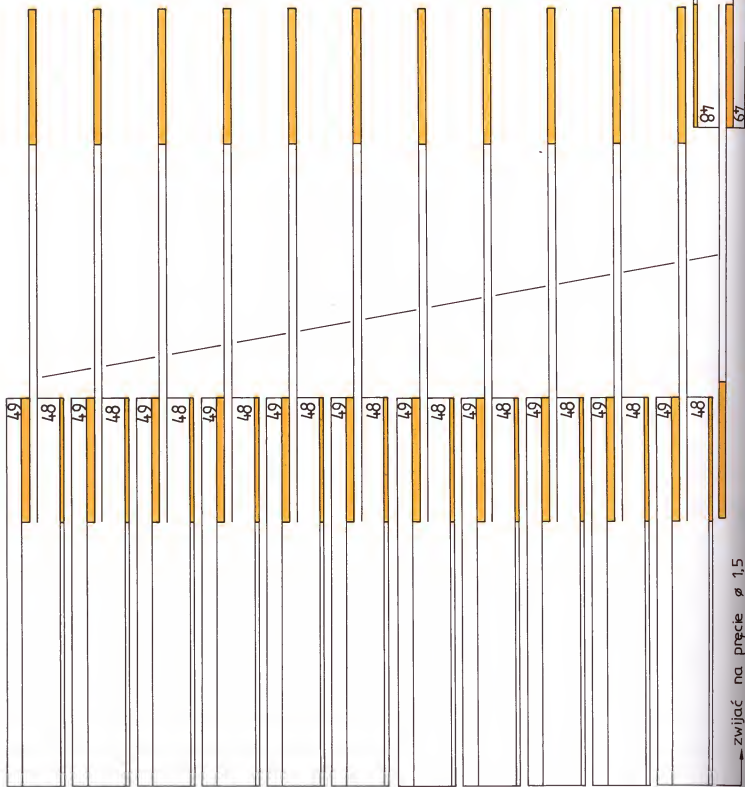
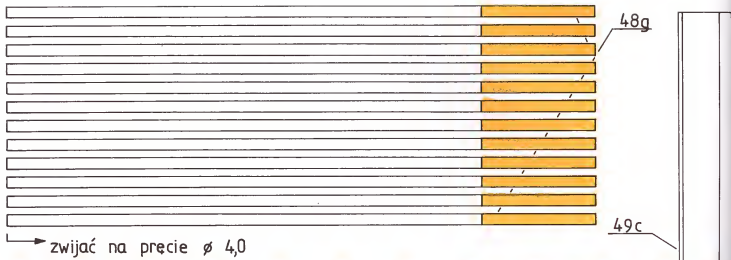


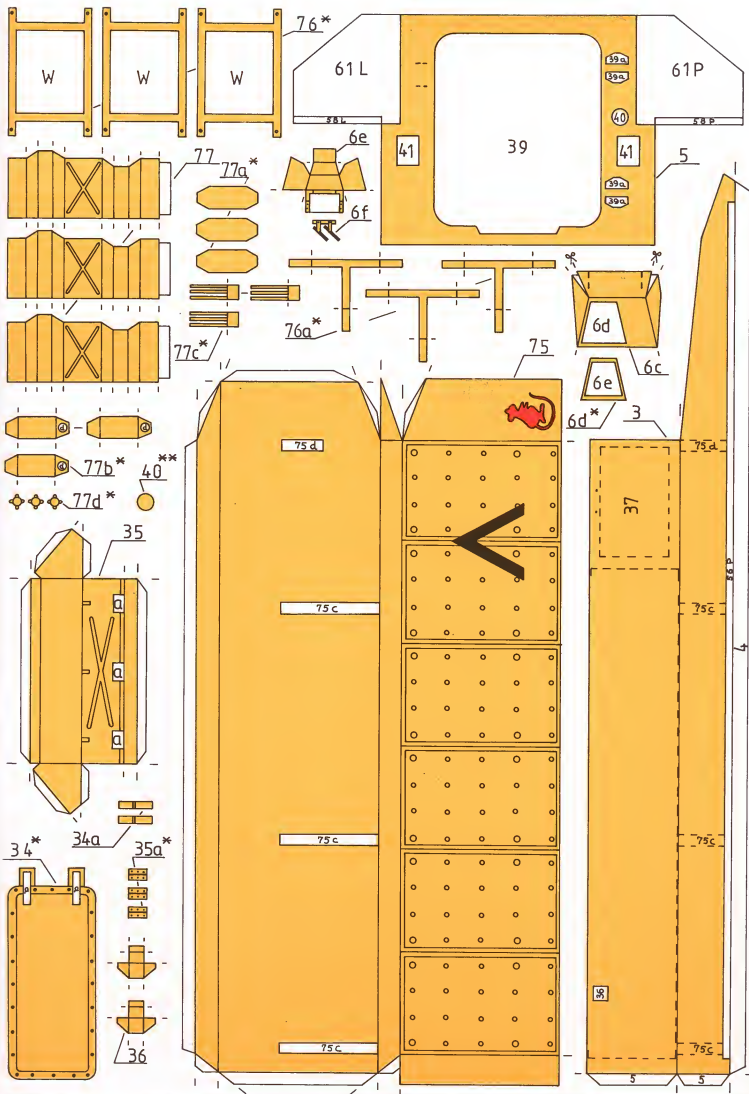
Rys. 10

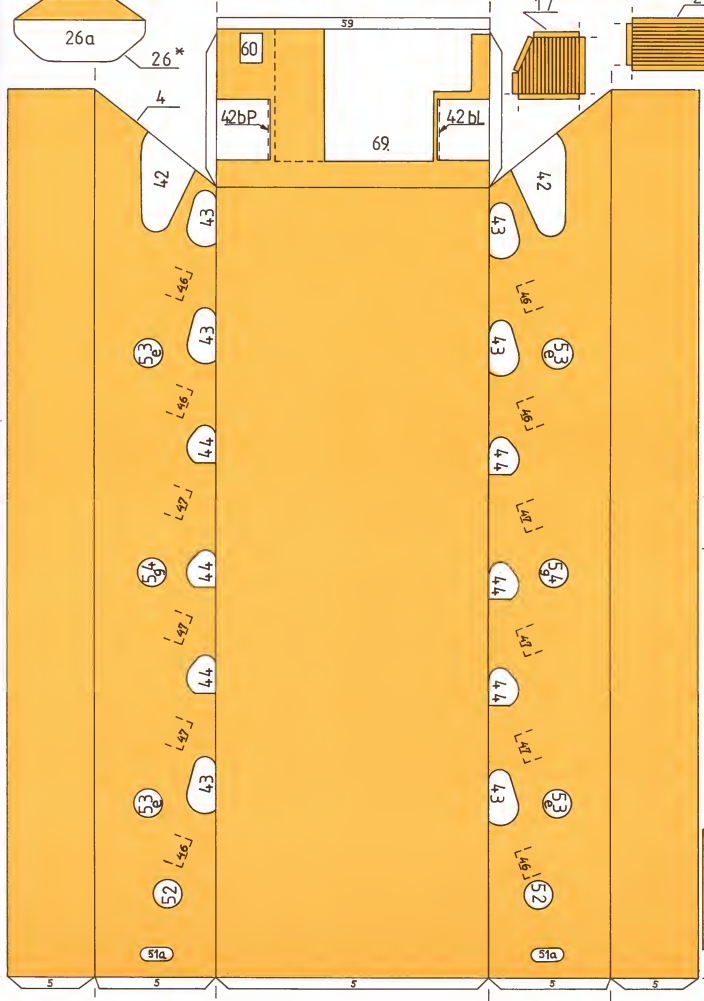
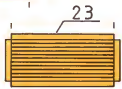
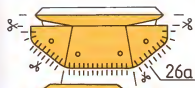






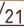




Rys. 3

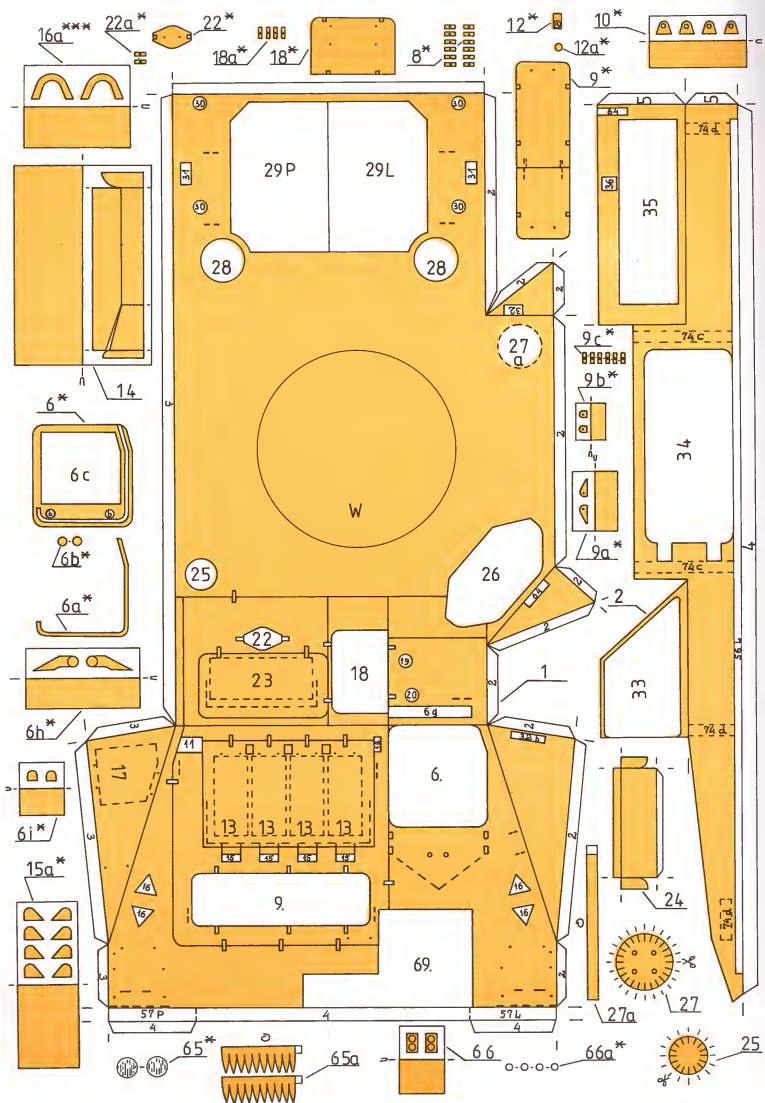


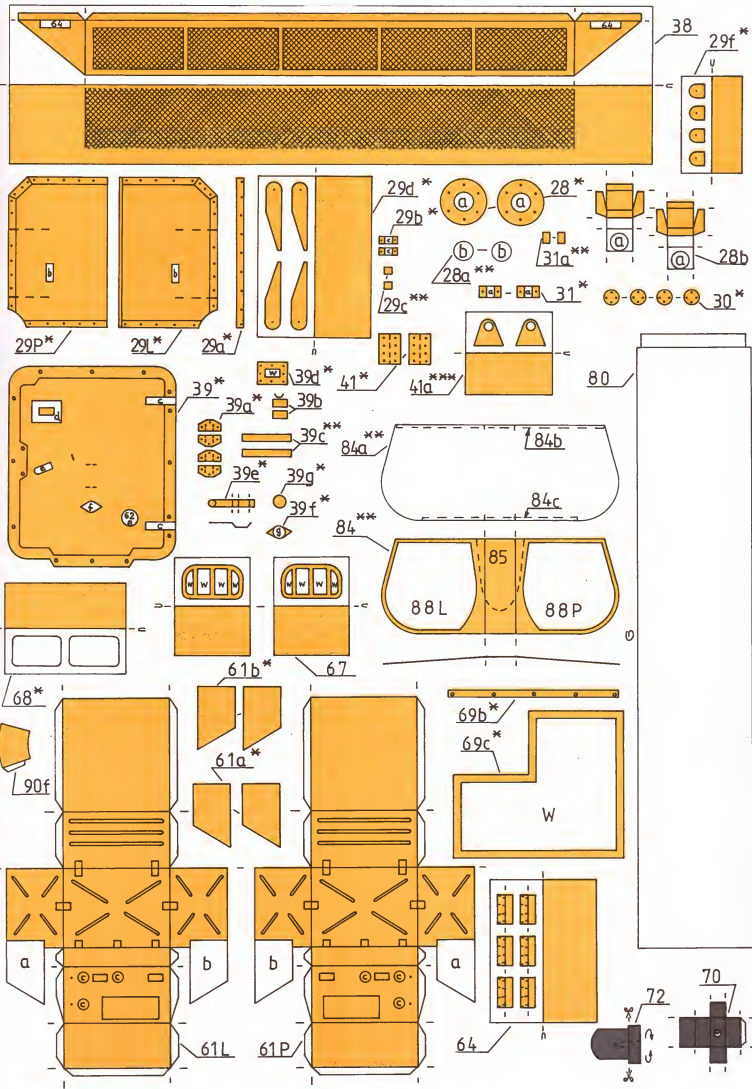


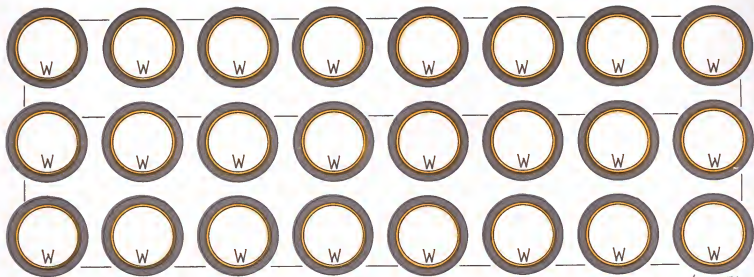




-  6g*
-  15**
-  16**
-  21*
-  19**
-  20**
-  11*
-  11a*
-  7

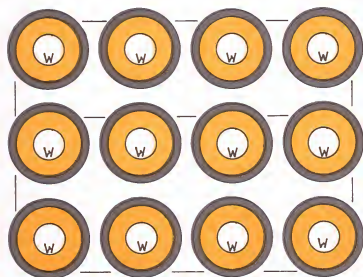




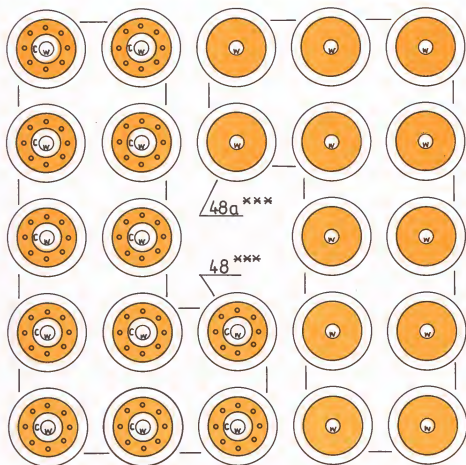
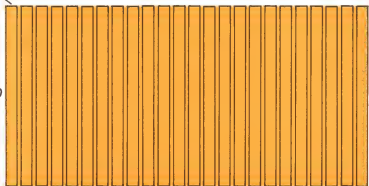


48f

48e^{**}



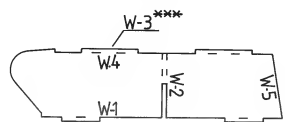
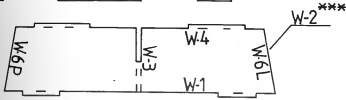
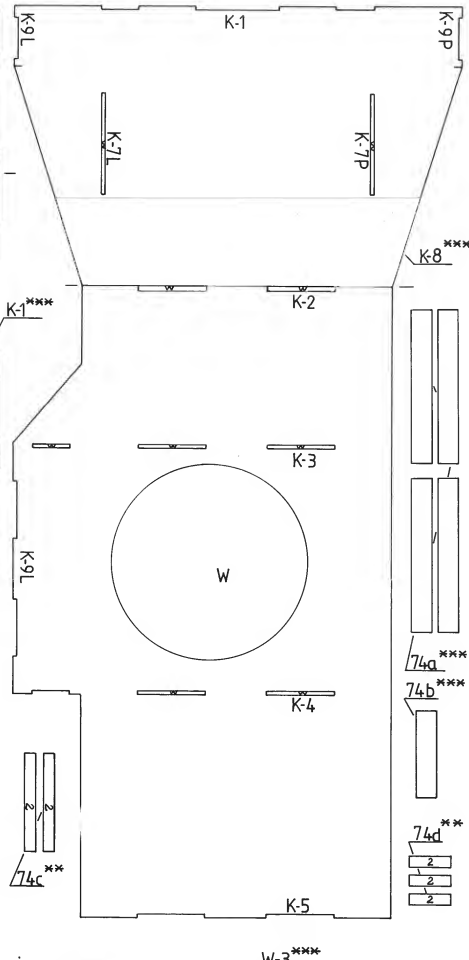
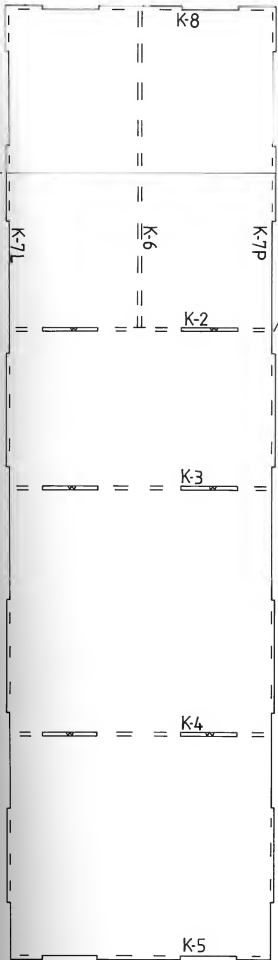
48b

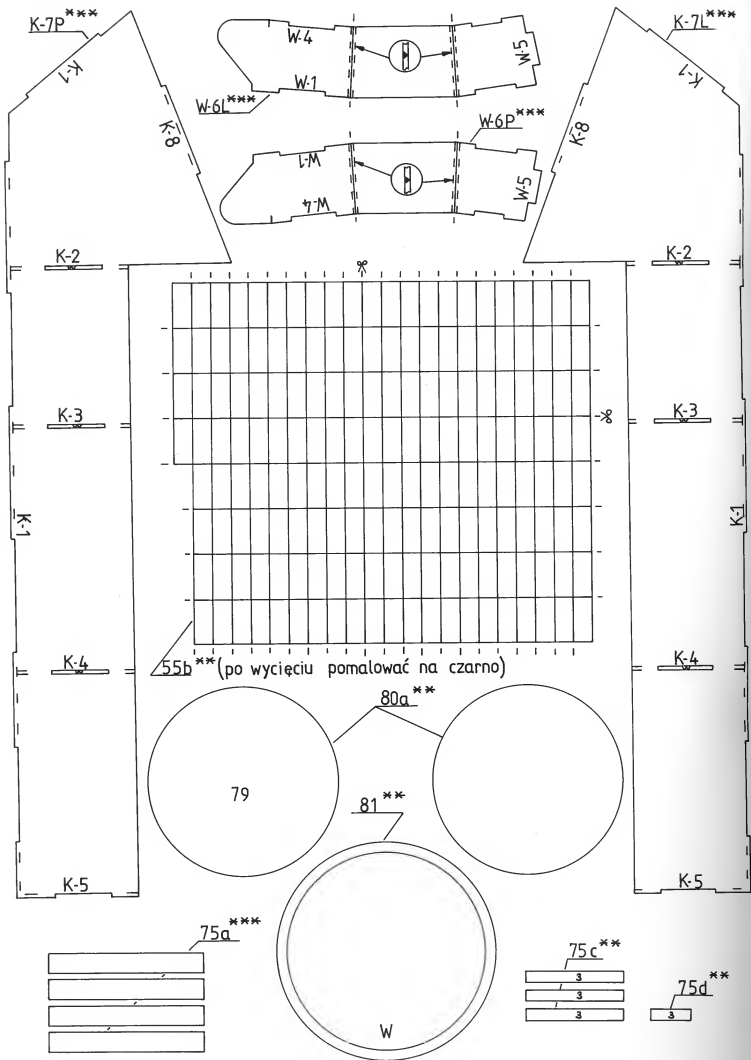


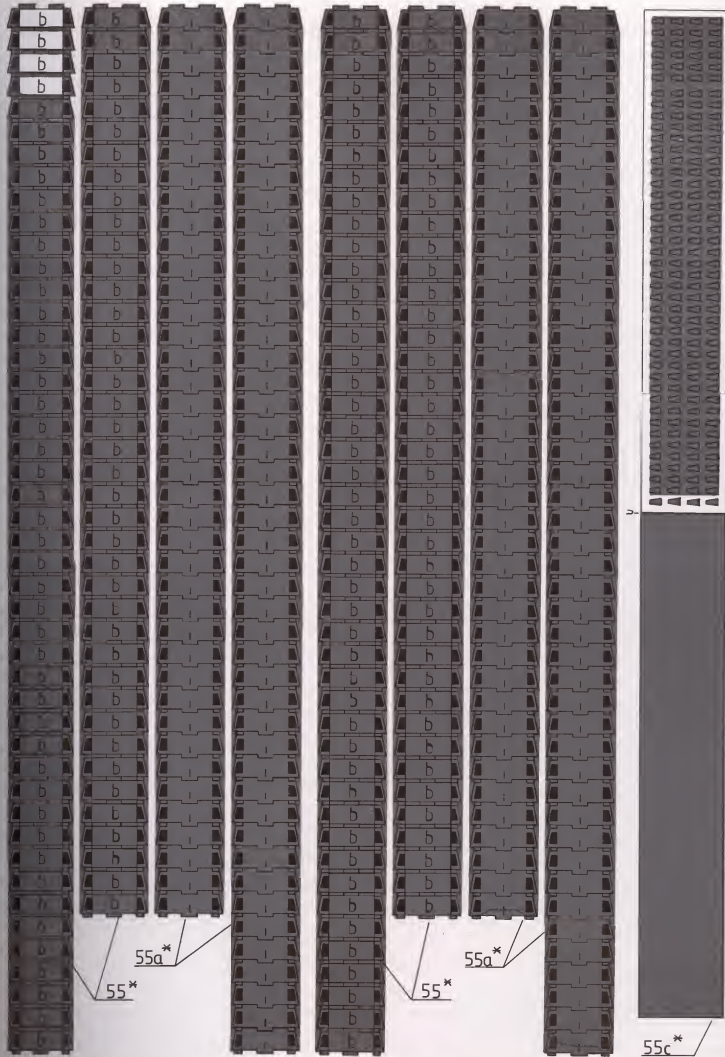
48c*

48d









b

b

b

b

b

b

b

b

b

b

b

b

b

b

b

b

b

b

b

b

b

b

b

b

b

b

b

b

b

b

b

b

b

b

b

b

b

b

b

55a*

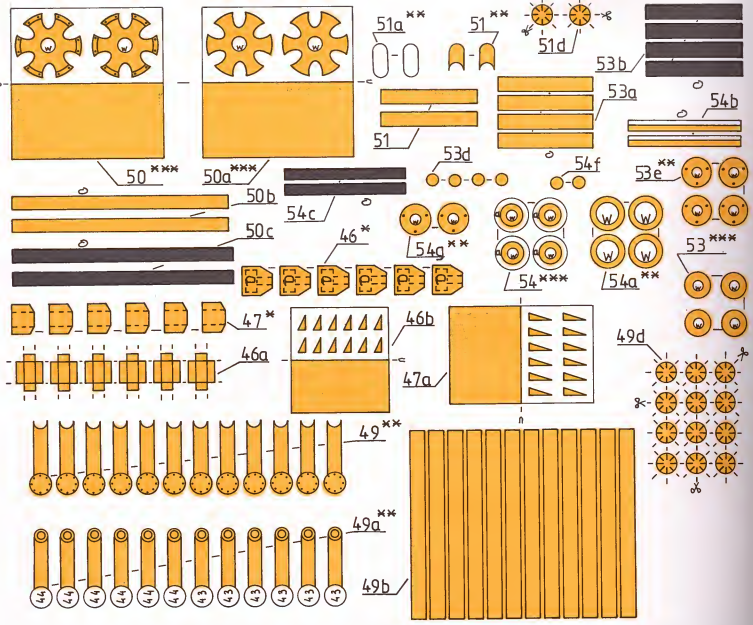
55*

55a*

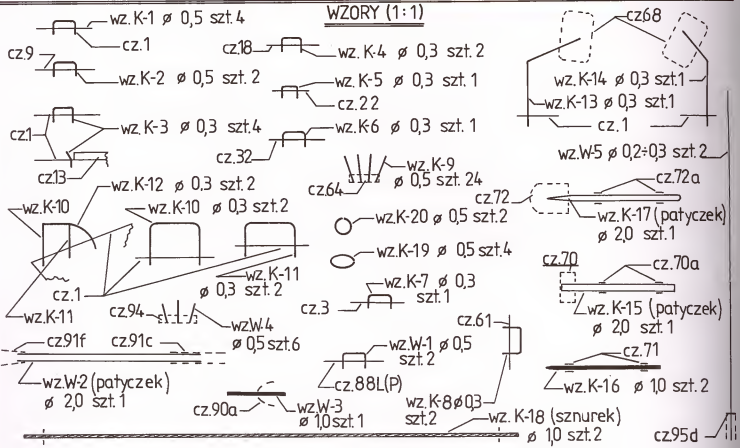
55*

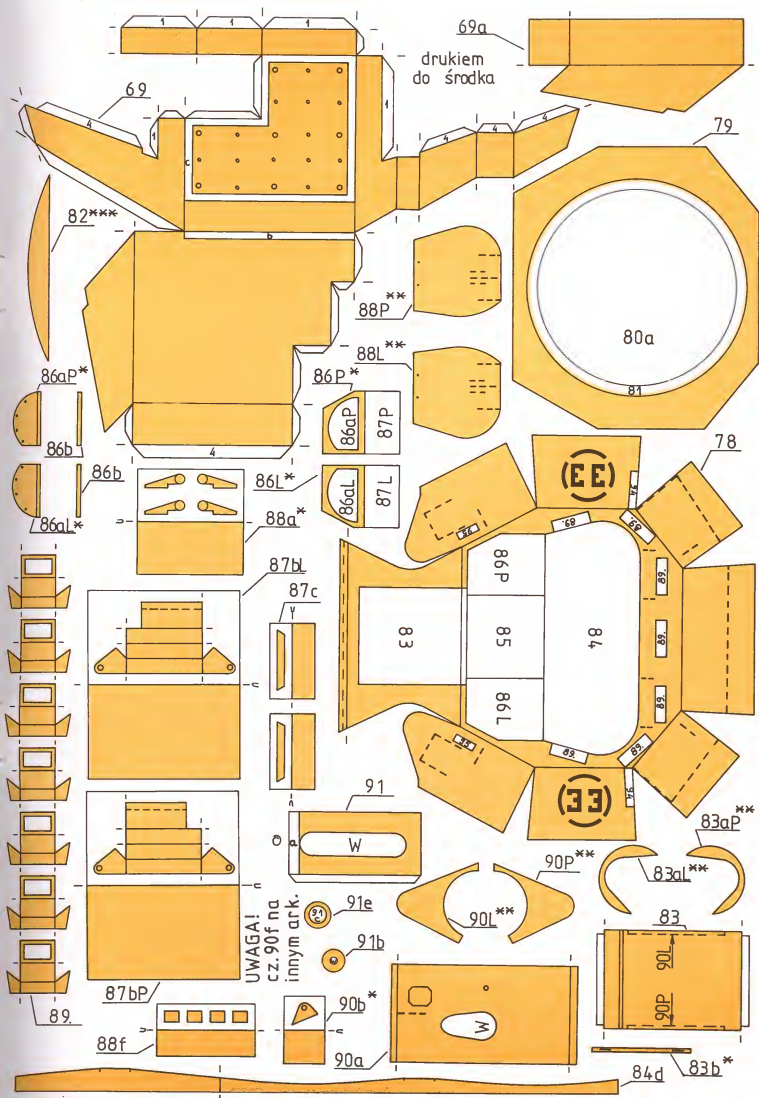
p

55c*



WZORY (1:1)





69a
drukem
do środka

69

79

80a

81

82***

88P**

88L**

86P*

86aP

87P

86aP*

86b

86b

86L*

88a*

86aL

87L

78

(EE)

87bL

87c

83

86P

85

84

86L

91

W

(33)

83aP**

90P**

83aL**

UWAGA!
cz. 90f na
innym ark.

91e

91b

90L**

83

87bP/

89

88f

90b*

90a

W

90L

90P

84d

83b*

